



Ordering code

6302.Ø.D

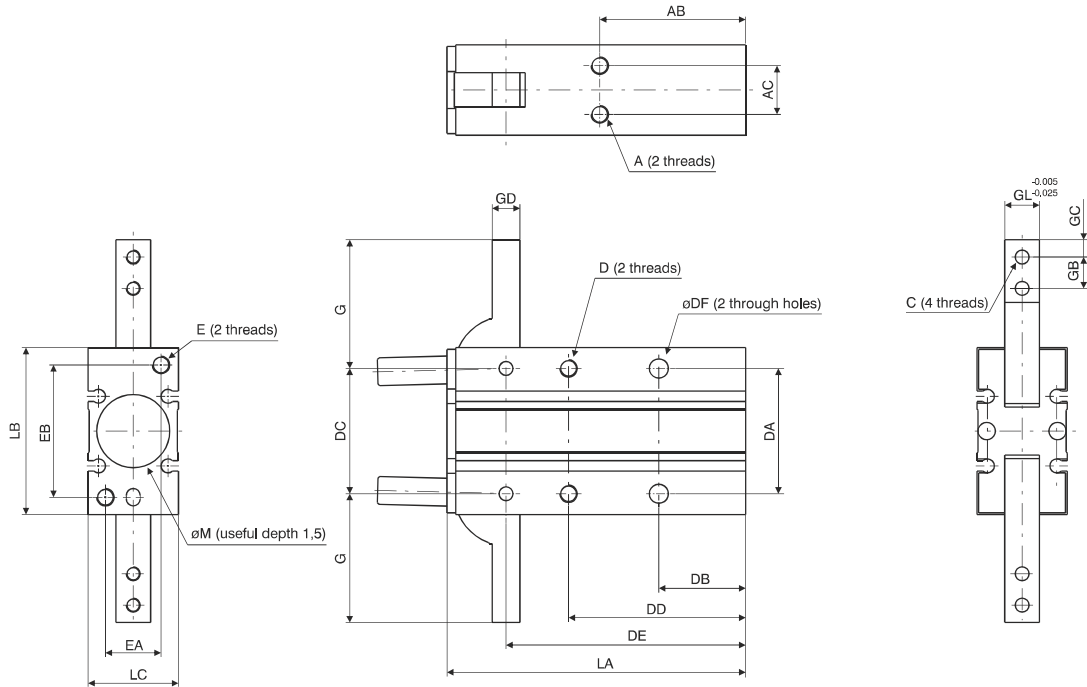
10
16
20
25

Construction characteristics

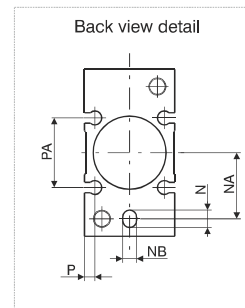
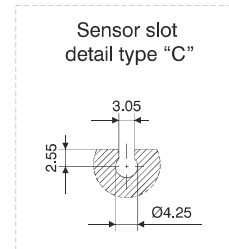
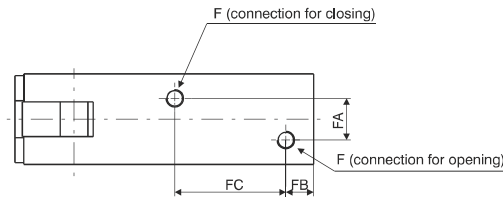
Body	anodised aluminium
Piston	aluminium
Fingers	steel
End cover	anodised aluminium

Technical characteristics

Function	double acting
Fluid	filtered and preferably lubricated air or not (If lubricated the lubrication must be continuous)
Working pressure	1 - 6 bar
Working temperature	-5C° - +70C°
Opening total stroke	-3° - 180°
Maximum operating frequency	from Ø10 to Ø25, 60 cycles/minute

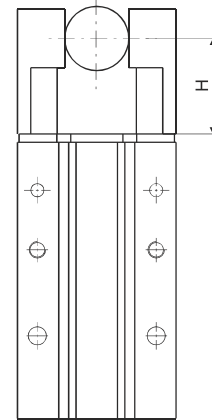
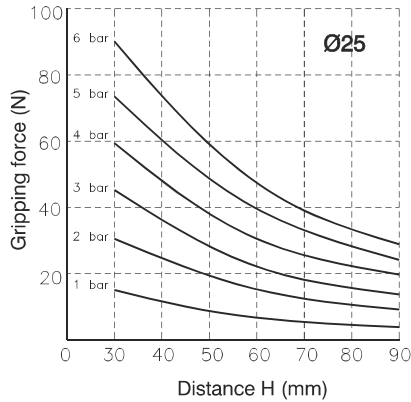
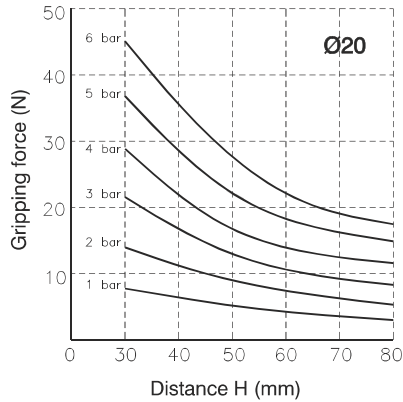
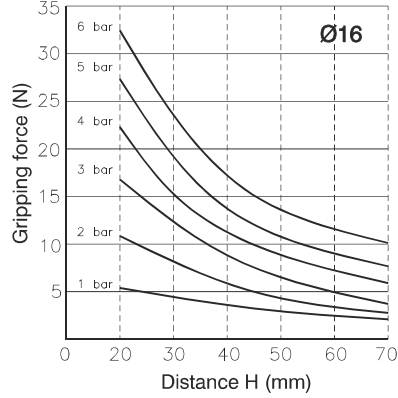
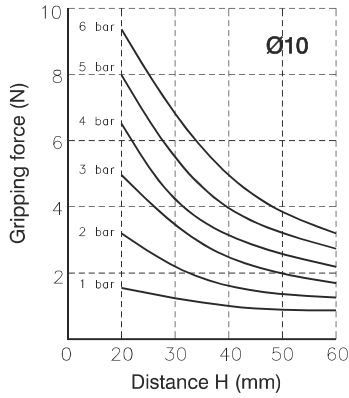


Bore	Ø10	Ø16	Ø20	Ø25
A	M3x0,5	M4x0,7	M5x0,8	M6x1
Useful depth	4	5	8	10
AB	30	33	42	50
AC	9	12	14	16
C	M3x0,5	M3x0,5	M4x0,7	M5x0,8
D	M3x0,5	M4x0,7	M5x0,8	M6x1
Useful depth	6	8	10	12
DA	24	30	36	42
DB	18	20	25	30
DC	22	28	36	45
DD	35	41	51	60
DE	47,5	55,5	69	86
DF	3,4	4,5	5,5	6,6
E	M3x0,5	M4x0,7	M5x0,8	M6x1
Useful depth	6	8	10	12
EA	9	12	16	18
EB	24	30	38	46
F	M5x0,8	M5x0,8	M5x0,8	M5x0,8
FA	3	8	2	14
FB	7	7	8	8
FC	23	25	32	42
G	23,5	28,5	37	45
GB	6	7	9	12
GC	3	4	5	6
GD	4	5	8	10
GL	6	8	10	12
LA	58	69	86	107
LB	30	38	48	58
LC	15	20	26	30
N	4	4	5	5
Useful depth	3	3	4	4
NA	9	15	19	23
ØM^{H9}	11	17	21	26
ØNB^{H9}	3	3	4	4
P	2	2,5	3	3
PA	13	18	20	24
Weight (gr.)	70	150	320	550

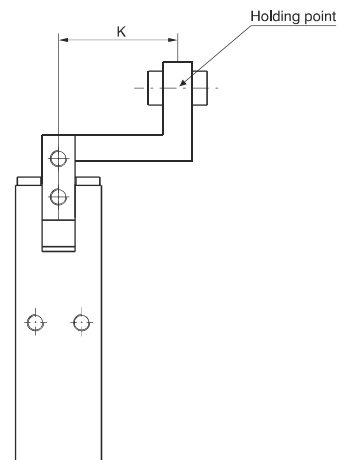
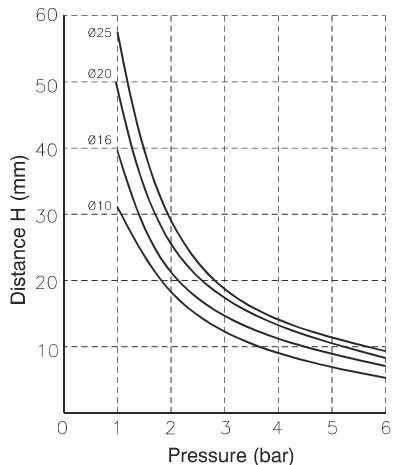


Gripping force 5 bar (Nm)

Bore	Ø10	Ø16	Ø20	Ø25
(Nm)	0,16	0,54	1,1	2,28



Confirmation of Holding point



Applications where the holding point is outside the recommended parameters shown on the above graph might affect the product life.