

**Ordering code**

6310.Ø

- 10
- 16
- 20
- 25

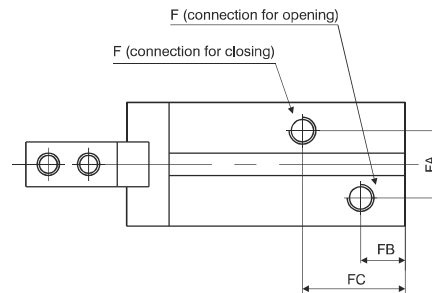
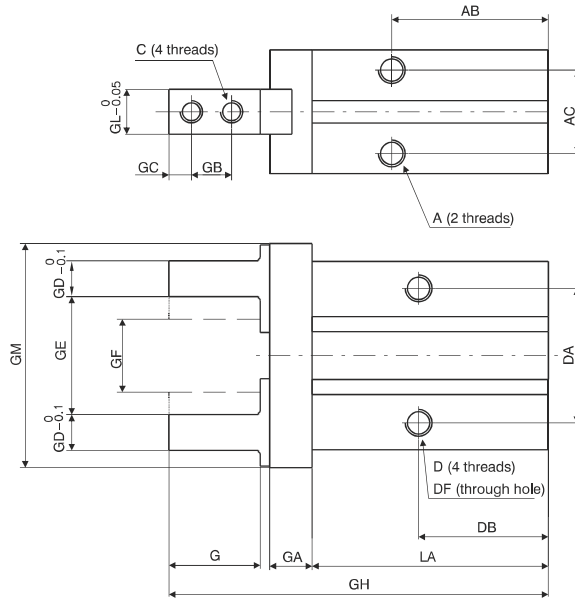
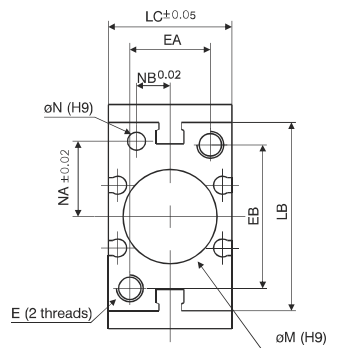
- D** = Double acting
- NC** = Single acting (N.C.)
- NO** = Single acting (N.O.)

**Construction characteristics**

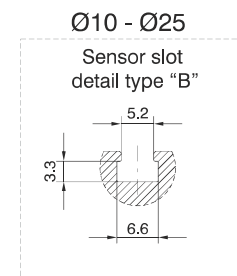
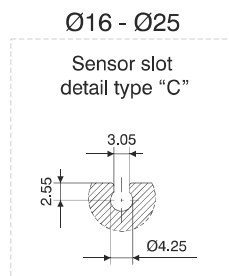
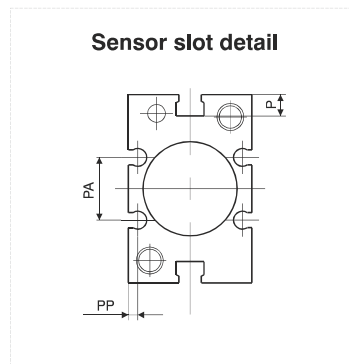
Body	anodised aluminium
Piston	aluminium or stainless steel (depending on the bore)
Fingers	steel
End cover	anodised aluminium
Seals	oil resistant NBR rubber

**Technical characteristics**

Fluid	filtered and preferably lubricated air or not (If lubricated the lubrication must be continuous)
Working pressure	double acting : 2 - 7 bar (for Ø10) - 1 - 7 (for other bores) single acting : 3.5 - 7 bar (for Ø10) - 2.5 - 7 ( for other bores)
Operating temperature	-5°C - +70°C
Maximum operating frequency	from Ø10 to Ø25, 180 cycles/minute



Bore	Ø10	Ø16	Ø20	Ø25
<b>A</b>	M3x0,5	M4x0,7	M5x0,8	M6x1
Useful depth	6	4,5	8	10
<b>AB</b>	27	30	35	36,5
<b>AC</b>	11,4	16	18,6	22
<b>C</b>	M2,5x0,45	M3x0,5	M4x0,7	M5x0,8
<b>D</b>	M3x0,5	M4x0,7	M5x0,8	M6x1
Useful depth	5,5	8	10	12
<b>DA</b>	16	24	30	36
<b>DB</b>	23	24,5	29	30
<b>ØDF</b>	2,6	3,4	4,3	5,1
<b>E</b>	M3x0,5	M4x0,7	M5x0,8	M6x1
Useful depth	6	8	10	12
<b>EA</b>	12	15	18	22
<b>EB</b>	18	22	32	40
<b>F</b>	M3x0,5	M5x0,8	M5x0,8	M5x0,8
<b>FA</b>	11	13	15	20
<b>FB</b>	9	7,5	10	10,7
<b>FC</b>	19	19	23	23,5
<b>G</b>	12	15,5	20	25
<b>GA</b>	6	7,5	9,5	11
<b>GB</b>	5,7	7	9	12
<b>GC</b>	3	4	5	6
<b>GD</b>	4	5	8	10
<b>GE</b>	15,2	20,9	26,3	33,3
<b>GF</b>	11,2	14,9	16,3	19,3
<b>GH</b>	57	67,5	84,8	102,7
<b>GL</b>	5	8	10	12
<b>GM</b>	29	38	50	63
<b>LA</b>	37,8	42,5	52,8	63,6
<b>LB</b>	23	30,6	42	52
<b>LC</b>	16,4	23,6	27,6	33,6
<b>ØM<sup>H9</sup></b>	11	17	21	26
Useful depth	2	2	3	3,5
<b>ØN<sup>H9</sup></b>	2	3	4	4
Useful depth	3	3	4	4
<b>NA</b>	7,6	11	16,8	21,8
<b>NB</b>	5,2	6,5	7,5	10
<b>P</b>	5,4	5,8	9	11,5
<b>PA</b>	/	11,6	14	19
<b>PP</b>	/	2,1	2,1	3,5
Weight (gr.)	55	120	230	425



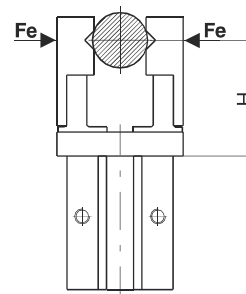
5



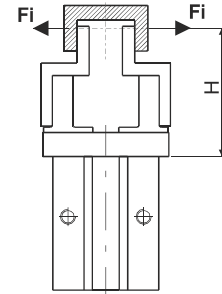
**Holding force (N)** (pressure 5 bar, holding point H=20 half stroke)

Version	Force	Bore			
		Ø10	Ø16	Ø20	Ø25
Double acting	Fe	9,8	30	42	65
	Fi	17	40	66	104
Single acting	N.O. Fe	6,3	24	28	45
	N.C. Fi	12	31	56	83

Fe = external holding force    Fi = internal holding force



**EXTERNAL HOLD**



**INTERNAL HOLD**

