

SCHEMA TECNICA “RAP”

I raccordi automatici della nostra serie RAP sono realizzati in Italia, a garanzia di elevati standard di qualità secondo le normative ISO di riferimento, e rispondono alle seguenti specifiche tecniche e applicative:

FLUIDO

Aria compressa (per altri fluidi contattare il nostro Ufficio Tecnico)

APPLICAZIONI

Pneumatica, idraulica a bassa pressione, secondo normativa DIN 3861-3870. Idonei al funzionamento con il vuoto

TUBI CONSIGLIATI E TOLLERANZE AMMESSE

TPU (Poliuretano), PA11/PA12 (Poliammide), TPE (Polietilene), TCO (Copoliestere)
Diam. da 4 a 10 mm +/- 0,05 - Diam. da 12 mm +/- 0,1

TEMPERATURE E PRESSIONI

Le temperature e le pressioni dipendono generalmente dalle caratteristiche del tubo impiegato, e comunque si suggerisce di non superare i 15 bar e temperature comprese fra -20°C e +70°C. A pag. 22 sono riportati i dati di resistenza a trazione e i valori limite di utilizzo (Pressione e Temperature) relativi ai principali tubi commerciali.
NOTA: Per dati più puntuali consultare il catalogo tecnico del proprio fornitore di tubi.

FILETTATURE

BSP cilindrica UNI-ISO 228, BSP conica UNI-ISO 7, Metrica ISO/R 262

MATERIALI UTILIZZATI

Ottone nichelato UNI EN 12164 CW614N (corpo, astine e basi girevoli), UNI EN 12165 CW617N (stampato)
POM copolimero ISO1043-1 (spintore, distanziale, sottomolla)
Acciaio Inox AISI 301 austenitico (pinza)
NBR 70 DWGV-EN549 UL157 (guarnizioni tenuta)

“RAP” TECHNICAL SHEET

The RAP series push-in fittings are produced in Italy according to the reference ISO norms as warranty of high quality level and answer to the followings technical specifications and applications:

FLUIDS

Compressed air (for different fluid pls contact our Technical Dept.)

APPLICATIONS

Pneumatic circuits, low pressure hydraulic applications, according to DIN 3861-3870 norms. Suitable for vacuum applications

SUGGESTED TUBES AND TOLERANCES

TPU (Polyurethane), PA11/PA12 (Polyamide), TPE (Polyethylene), TCO (Copolyester)
Diam. between 4 and 10 mm +/- 0,05 - From 12 mm +/- 0,1

TEMPERATURES AND PRESSURES

Temperatures and pressures usually depend by the technical features of the employed tubes, anyway it is suggested a limit working pressure of 15 bar and a temperature range between -20°C and +70°C. At page 22 are indicated the load traction resistance values and the main working and breaking limit (Pressure and Temperature) of the main commercial tubing.
NOTE: for more complete informations pls read the technical catalogue of your tube supplier.

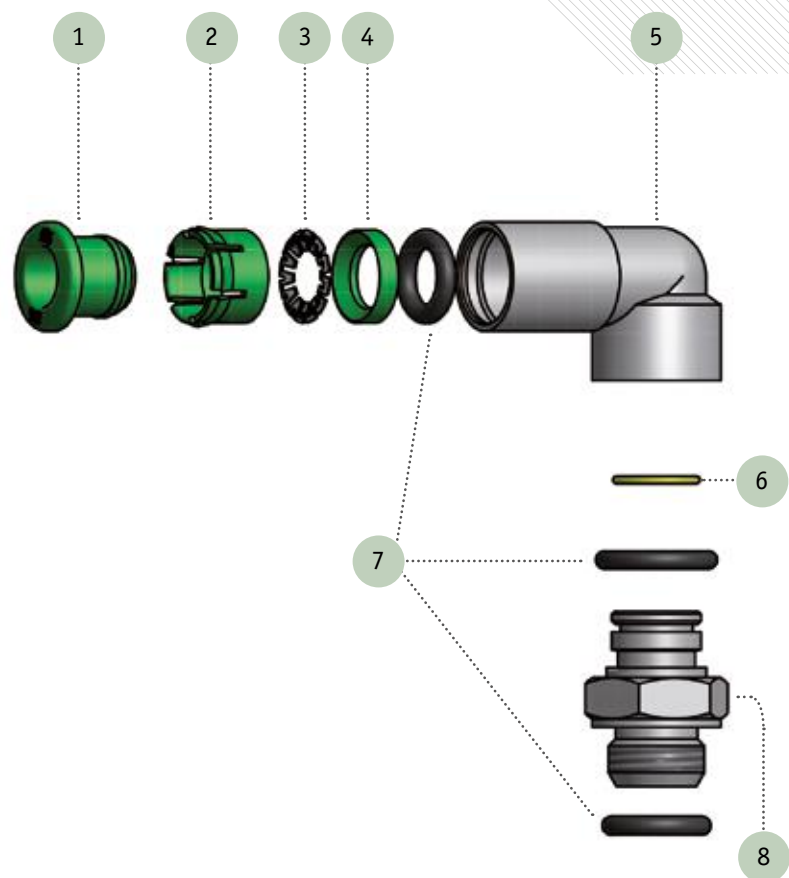
THREAD TYPE

BSP parallel UNI-ISO 228, BSP tapered UNI-ISO 7, Metric ISO/R 262

MATERIALS

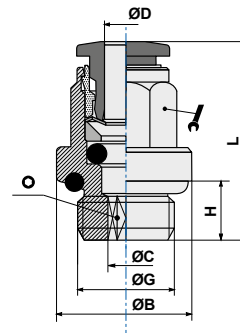
Nickel plated brass UNI EN 12164 CW614N (body, swivel stems and bases), UNI EN 12165 CW617N (molded)
POM copolymer ISO1043-1 (sleeve, lock and supporting rings)
Stainless steel AISI 301 austenitic (spring)
NBR 70 DWGV-EN549 UL157 (seals)

- 1 ANELLO SPINGITORE
THRUST SLEEVE
- 2 DISTANZIALE DI FERMO
LOCK RING
- 3 PINZA DI AGGRAFFAGGIO
CRIMPING GRIPPER
- 4 ANELLO DI SOSTEGNO
SUPPORTING RING
- 5 CORPO RACCORDO
FITTING BODY
- 6 ANELLO ELASTICO
ELASTIC RING
- 7 O-RING DI TENUTA
O-RING SEAL
- 8 BASE GIREVOLE
SWIVEL BASE

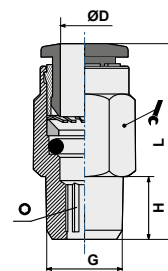


ART. 01 Dritto filetto cilindrico maschio con O-Ring
Straight male adaptor (parallel)

CODICE	ØD	G	ØC	ØB	H	L			
01CH04M5	4	M5	2,2	11,3	3,5	20	10	2	100
0104M5	4	M5	2,6	9	4	20,5	Ø9	2,5	100
0104M6	4	M6	2,6	9	5	20,5	Ø9	2,5	50
010418	4	1/8	2,6	13,5	5,5	20	9	2,5	50
010414	4	1/4	2,6	17	6,5	21	9	2,5	50
0106M5	6	M5	2,6	11	4	22,8	Ø11	2,5	50
0106M6	6	M6	2,6	11	5	24,8	Ø11	2,5	50
010618	6	1/8	4,2	13,5	5,5	25,3	11	4	50
010614	6	1/4	4,2	17	6,5	24,3	11	4	50
010818	8	1/8	5,2	12,8	5,5	27	13	5	50
010814	8	1/4	6,2	17	6,5	25,5	13	6	50
010838	8	3/8	6,2	20	7,5	25,5	13	6	50
010812	8	1/2	6,2	24	10	24	17	6	25
011018	10	1/8	5,9	9	5,5	29	17	4	25
011014	10	1/4	7,3	16	6,5	30,4	16	7	50
011038	10	3/8	8,3	21	7,5	30,9	16	8	50
011012	10	1/2	14,1	23	10	24,7	17	8	25
011214	12	1/4	7,3	16	6,5	33,2	19	7	25
011238	12	3/8	10,3	22	7,5	33,2	19	10	25
011212	12	1/2	10,3	24	9	33,2	19	10	25
011438	14	3/8	10,3	21	7,5	35	19	10	25
011412	14	1/2	12,3	25	9	35	19	12	25




ART. 01C Dritto filetto conico maschio
Straight male adaptor (tapered)

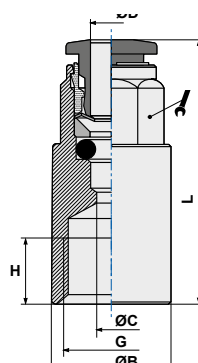
CODICE	ØD	G		H	L			
01C0418	4	1/8		7,5	18	10	2,5	50
01C0414	4	1/4		9,5	16	14	2,5	50
01C0438	4	3/8		7,5	17,4	17	3	25
01C0618	6	1/8		7,5	19,5	12	4	50
01C0614	6	1/4		9,5	22,3	14	4	50
01C0638	6	3/8		10,5	20,3	17	4	25
01C0612	6	1/2		10	23,2	24	4	25
01C0818	8	1/8		7,5	25,5	14	5	50
01C0814	8	1/4		9,5	24,5	14	6	50
01C0838	8	3/8		10,5	21,5	17	6	50
01C0812	8	1/2		12,5	25,5	21	6	25
01C1018	10	1/8		7,5	29,5	17	4	25
01C1014	10	1/4		9,5	30,8	17	7	50
01C1038	10	3/8		10,5	28,3	17	8	50
01C1012	10	1/2		13,5	26,6	21	8	25
01C1218	12	1/8		7	31	21	4	25
01C1214	12	1/4		9,5	33	19	6	25
01C1238	12	3/8		10,5	30	21	10	25
01C1212	12	1/2		13,5	32,5	21	10	25
01C1438	14	3/8		9	37,5	21	10	25
01C1412	14	1/2		14	35	21	10	25



ART. 02



Dritto femmina
Straight female adaptor

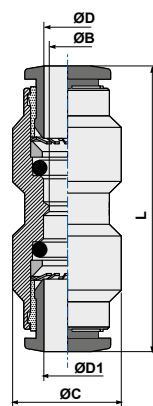
CODICE	ØD	G	ØC	ØB	H	L		
020418	4	1/8	3	12	6,5	26,5	9	50
020414	4	1/4	3	17	10	29,5	9	50
020618	6	1/8	5	12	6,5	28,3	11	50
020614	6	1/4	5	17	10	31,3	11	50
020818	8	1/8	7	12	6,5	28,5	13	50
020814	8	1/4	7	17	10	32,5	13	50



ART. 03



Dritto innestabile
Straight connector

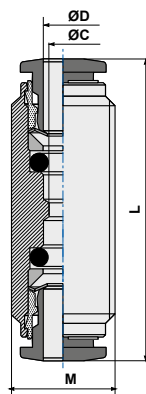
CODICE	ØD	ØD1	ØB	ØC	L		
030400	4	4	3	11	32		50
030600	6	6	5	13	36,1		50
030800	8	8	7	15	38		50
031000	10	10	9	18	42,3		50
031200	12	12	11	21	45,8		25
031400	14	14	13	23	48,9		25



ART. 03F



Dritto innestabile filettato
Threaded connector

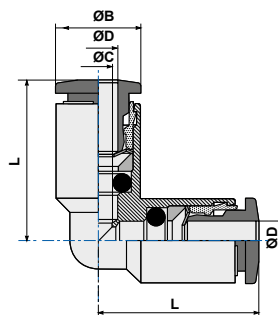
CODICE	ØD	ØC	M	L		
03F0400	4	3	11x1	32		50
03F0600	6	5	14x1	36,1		50
03F0800	8	7	16x1	38		50
03F1000	10	9	18x1	42,3		50
03F1200	12	11	22x1	45,8		25
03F1400	14	13	24x1	47,5		25



ART. 04

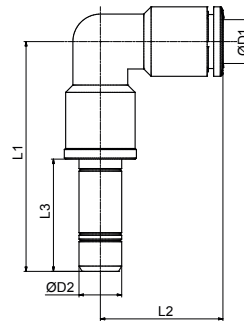
Gomito innestabile
Elbow connector

CODICE	ØD	ØC	ØB	L		
040400	4	3	10	19		50
040600	6	5	11	20,6		50
040800	8	7	13	23		50
041000	10	8	16	26,4		50
041200	12	10	19	28,9		25
041400	14	12	21	31,5		25

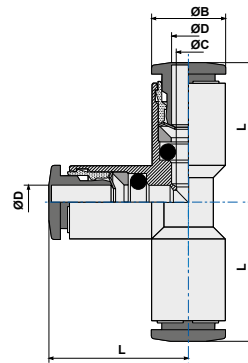


ART. 04L0 Gomito innestabile con codolo
Plug-in elbow connector

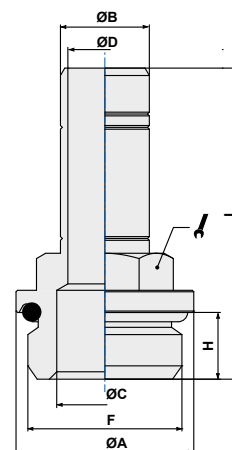
CODICE	ØD1	ØD2	L1	L2	L3	
0404L0	4	4	34,5	18	16,7	50
0406L0	6	6	42,5	23	19,5	50
0408L0	8	8	46,5	25,5	21	50
0410L0	10	10	51	27	24	25
0412L0	12	12	54	29	25	25


ART. 05 T innestabile
T connector

CODICE	ØD	ØC	ØB	L	
050400	4	3	9	17,3	50
050600	6	5	11	20,6	50
050800	8	7	13	23	50
051000	10	8	16	26,4	25
051200	12	10	19	28,9	25
051400	14	12	21	31,5	10




ART. 06 Innesto filetto cilindrico con O-Ring
Adaptor parallel (short)

CODICE	ØB	F	ØA	ØC	ØD	H	L		
0604M5	4	M5	8	2	2	4	24,7	8	50
0604M6	4	M6	9	2	2	5	25,7	8	50
060418	4	1/8	13	5,5	2	5,5	27,7	13	50
060414	4	1/4	16	7,5	2	6,5	29,2	13	50
0606M5	6	M5	8	2,6	2,6	4	27,5	8	50
0606M6	6	M6	9	2,6	2,6	5	29,0	8	50
060618	6	1/8	13	5,5	4	5,5	30,5	13	50
060614	6	1/4	16	7,5	4	6,5	32,0	13	50
060818	8	1/8	13	6	6	5,5	32,0	13	50
060814	8	1/4	16	7,5	6	6,5	33,5	13	50
060838	8	3/8	20	9	6	7,5	35,5	13	50
061018	10	1/8	13	6	6	5,5	35,0	13	50
061014	10	1/4	16	8	8	8	38,0	13	50
061038	10	3/8	20	8	8	7,5	39,5	13	50
061214	12	1/4	16	8	8	6,5	37,5	13	25
061238	12	3/8	20	11	10	7,5	40,5	13	25
061212	12	1/2	24	13	10	9	42,0	16	25
061438	14	3/8	20	12	12	7,5	43,0	16	25
061412	14	1/2	24	13	12	9	44,5	16	25

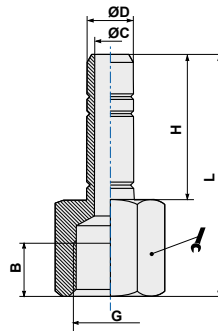


ART. 06F

Innesto filetto cilindrico femmina
Female parallel adaptor



CODICE	ØD	G	ØC	B	H	L			
06F0618	6	1/8	4	7	19,5	32,5		12	50
06F0614	6	1/4	4	8	19,5	35,5		17	50

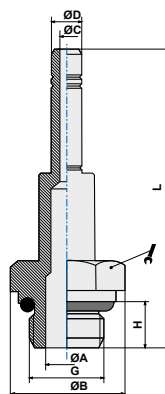
Art. disponibile fino ad esaurimento scorte
Item available while stocks last



ART. 60


Innesto prolungato filetto cilindrico con O-Ring
Adaptor parallel long

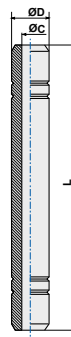
CODICE	ØD	G	ØC	ØB	H	L	ØA		
600418	4	1/8	2	13	5,5	39	6	13	50
600618	6	1/8	4	13	5,5	44,5	5,5	13	50
600614	6	1/4	4	16	6,5	48	7,5	13	50
600818	8	1/8	6	13	5,5	48	6	13	50
600814	8	1/4	6	16	6,5	49,5	7,5	13	50
600838	8	3/8	6	20	7,5	51,5	9	13	50
601014	10	1/4	8	16	6,5	54	8	13	50
601038	10	3/8	8	13	7,5	57,5	9	13	25



ART. 07


Prolungamento
Connector

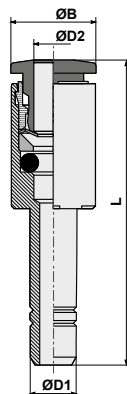
CODICE	ØD		ØC		L	
070400	4		2		33,4	100
070600	6		4		39	50
070800	8		6		42	50
071000	10		8		48	50
071200	12		10		50	50



ART. 08

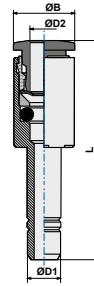
Riduzione con codolo
Plug-in reducer

CODICE	ØD1	ØD2		ØB	L	
080604	6	4		9	32,5	50
080804	8	4		9	34	50
080806	8	6		11	36	50
081006	10	6		11	39,3	50
081008	10	8		13	39	50
081208	12	8		13	39,5	25
081210	12	10		16	41,4	25
081406	14	6		15	43,8	25

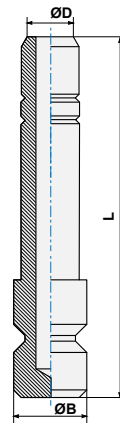


ART. 08/E *Maggiorazione con codolo*
Plug-in increaser

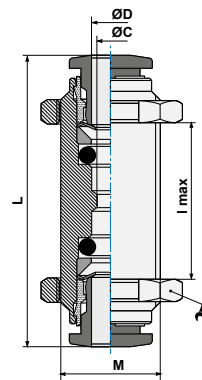
CODICE	ØD1	ØD2		ØB	L		
08E0406	4	6		11	35,5		50
08E0608	6	8		13	39		50


ART. 09 *Tappo*
Plug

CODICE	ØD	ØB		L		
090400	4	5		26	50	
090600	6	7		29	50	
090800	8	9		31,5	50	

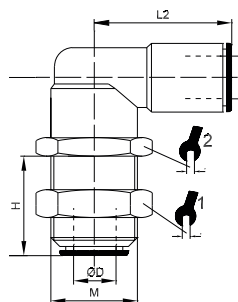

ART. 10 *Passaparete*
Bulkhead connector

CODICE	ØD	ØC	M	I _{max}	L		
100400	4	3	11x1	8	32	14	50
100600	6	5	14x1	8	36,1	17	50
100800	8	7	16x1	10	38	18	50
101000	10	9	18x1	12	42,3	21	25
101200	12	11	22x1	17	45,8	26	25
101400	14	13	24x1	18	47,5	27	25



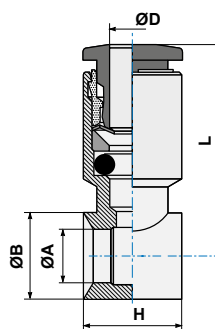
ART. 10L Passaparete ad L
Elbow bulkhead

CODICE	ØD	M	H	L1	L2			
10L0400	4	M11x1	12,5	25,5	20	13	13	50
10L0600	6	M14x1	15	28	21	17	17	50
10L0800	8	M16x1	17	30,5	24	18	18	50
10L1000	10	M18x1	19	35	27	21	21	25



ART. 13 Anello semplice
Single banjo body

CODICE	ØD	G*	ØA	ØB	H	L	
1304M5	4	M5	5	8	9	19,5	50
130418	4	1/8	9,9	14	15	21,1	50
130618	6	1/8	9,9	14	15	24,3	50
130614	6	1/4	13,3	18	17	25,5	50
130818	8	1/8	9,9	14	15	24,8	50
130814	8	1/4	13,3	18	17	26,5	50
130838	8	3/8	16,75	21	20	28,0	50
131014	10	1/4	13,3	18	17	28,4	50
131038	10	3/8	16,75	21	20	29,9	25
131214	12	1/4	13,3	18	17	30,9	25
131238	12	3/8	16,75	21	20	31,4	25
131212	12	1/2	21	26	24	34,9	25

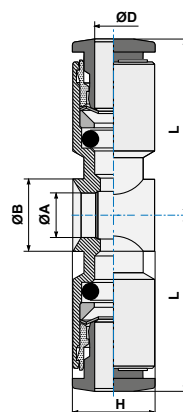


(*) G = filetto vite/asta
(*) G = steam thread

Vedi capitolo Astine pag. 39
See page 39 of Stems section

ART. 14 Anello doppio
Double banjo body

CODICE	ØD	G*	ØA	ØB	H	L	
1404M5	4	M5	5	8	9	19,5	50
140418	4	1/8	9,9	14	15	21,1	50
140618	6	1/8	9,9	14	15	24,3	50
140614	6	1/4	13,3	18	17	25,5	50
140818	8	1/8	9,9	14	15	24,8	50
140814	8	1/4	13,3	18	17	26,5	50
140838	8	3/8	16,75	21	20	28	50
141014	10	1/4	13,3	18	17	28,4	50
141038	10	3/8	16,75	21	20	29,9	25

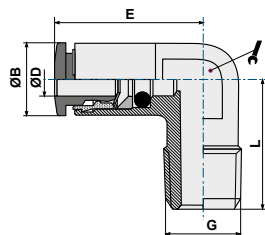


(*) G = filetto vite/asta
(*) G = steam thread

Art. disponibile fino ad esaurimento scorte
Item available while stocks last

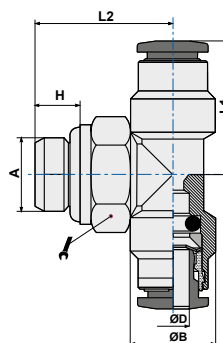
ART. 19 Raccordo ad elle fisso
Elbow male adaptor

CODICE	ØD	G	ØB	E	L		
190418	4	1/8	9	18,6	16,5	10	100
190618	6	1/8	11	23,8	16,5	10	100
190614	6	1/4	11	25,3	22,5	11	100
190818	8	1/8	13	25,5	18,5	11	100
190814	8	1/4	13	25,5	22,0	11	100
191014	10	1/4	16	28,0	24,0	13	50



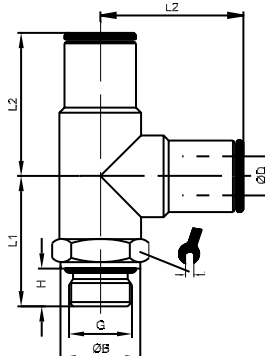
ART. 20 Raccordo a T centrale girevole
Swivel male stud tee parallel

CODICE	ØD	A	H	ØB	L1	L2		
2004M5	4	M5	4	9	17,3	20,0	8	50
200418	4	1/8	5,5	11,40	17,3	18,5	13	50
200414	4	1/4	6,5	9	19,0	22,5	16	50
2006M5	6	M5	4	11,20	20,5	21	8	50
200618	6	1/8	5,5	11	19,5	18,5	13	50
200614	6	1/4	6,5	11	22,1	22,5	16	50
200818	8	1/8	5,5	13	23,0	20,5	13	50
200814	8	1/4	6,5	13	23,0	22,5	16	50
200838	8	3/8	7,5	13	24,5	25,5	18	25
201014	10	1/4	6,5	16	26,4	24,5	16	25
201038	10	3/8	7,5	16	26,4	25,5	18	25



ART. 21 Raccordo a T laterale girevole
Swivel male branch tee parallel

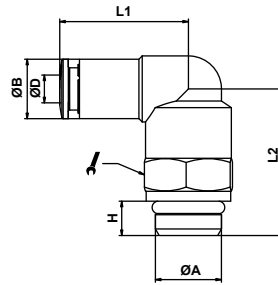
CODICE	ØD	G	H	ØB	L1	L2		
2104M5	4	M5	4	8	16,5	19	9	100
210418	4	G1/8	6	13	18,5	17,5	13	100
210414	4	G1/4	8	16	22,5	19	13	100
210618	6	G1/8	6	13	20	21	13	100
210614	6	G1/4	8	16	24	21	13	100
210818	8	G1/8	6	13	20	23	13	100
210814	8	G1/4	8	16	24	23	13	100
210838*	8	G3/8	9	20	25,5	23	13	50
211014*	10	G1/4	8	16	24	27	16	50



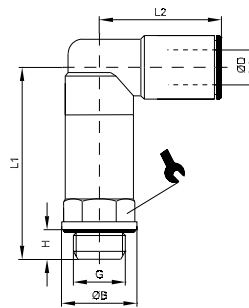
* = Art. disponibile fino ad esaurimento scorte
* = Item available while stocks last

ART. 22 Gomito girevole filetto cilindrico maschio con O-Ring
Swivel elbow male adaptor parallel

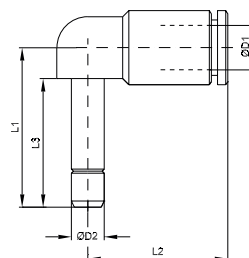
CODICE	ØD	A	H	ØB	L1	L2		
2204M5	4	M5	4	9,1	17,3	14,8	9	100
2204M12	4	M12x1,5	8	9,1	18,0	20,0	13	100
220418	4	1/8	6	9,1	18,0	20,0	13	100
220414	4	1/4	8	9,1	18,0	24,0	13	100
220438	4	3/8	9	9,1	18,0	25,5	13	100
2206M5	6	M5	4	11	14,5	21,0	9	100
2206M12	6	M12x1,5	8	11	23,0	25,5	13	100
220618	6	1/8	6	11	23,0	20,0	13	100
220614	6	1/4	8	11	23,0	24,0	13	100
220638	6	3/8	9	11	23,0	25,5	13	100
2208M12	8	M12x1,5	8	13	25,5	25,5	13	100
220818	8	1/8	6	13	25,5	20,3	13	100
220814	8	1/4	8	13	25,5	24,3	13	100
220838	8	3/8	9	13	25,5	25,8	13	50
221014	10	1/4	8	16	27,0	26,0	16	50
221038	10	3/8	9	16	27,0	27,5	16	50
221012	10	1/2	11	16	27,0	27,5	16	50
221214	12	1/4	8	19	29,0	30,5	16	25
221238	12	3/8	9	19	29,0	28,5	20	25
221212	12	1/2	11	19	29,0	33,5	20	25
221438	14	3/8	9	21	32,0	28,5	20	25
221412	14	1/2	11	21	32,0	33,5	20	25


ART. 22L Gomito girevole cilindrico lungo
Swivel longer elbow male adaptor parallel



CODICE	ØD	G	ØB	H	L1	L2		
22L04M5	4	M5	8	4	23,5	18	9	25
22L0418	4	G1/8	13	6	33	20	13	25
22L0414	4	G1/4	16	8	38	20	13	25
22L06M5	6	M5	8	4	23,5	21	9	25
22L0618	6	G1/8	13	6	33	21	13	25
22L0614	6	G1/4	16	8	38	21	13	25
22L0818	8	G1/8	13	6	33	24	13	25
22L0814	8	G1/4	16	8	38	24	13	25
22L1014	10	G1/4	16	6,5	37	26,5	16	25

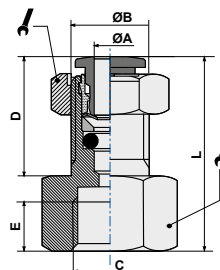

ART. 22L0 Gomito innestabile con codolo
Plug-in elbow connector


CODICE	ØD1	ØD2	L1	L2	L3	
2204L0	4	4	19,5	18	15,5	50
2206L0	6	6	26,5	20	18	50
2208L0	8	8	31	24	19,5	50
2210L0	10	10	41	25	24	25
2212L0	12	12	29	28	25	25

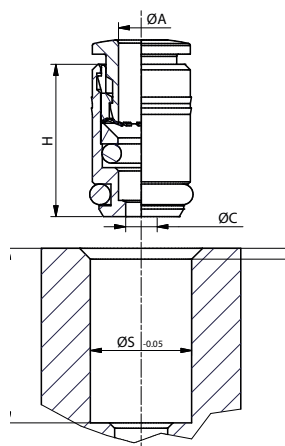





ART. 25 Passaparete femmina
Female bulkhead

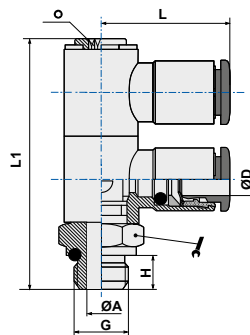
CODICE	ØA	C	ØB	D	E	L		
250418	4	1/8	M12x1	15,5	8,5	24,0	14	25
250618	6	1/8	M14x1	15,8	8,5	26,8	15	25
250614	6	1/4	M14x1	15,8	11,0	29,5	17	25
250818	8	1/8	M16x1	16,0	8,5	26,5	19	25
250814	8	1/4	M16x1	16,0	11,0	32,0	19	25





ART. 27 Cartuccia
Cartridge

CODICE	ØD	ØC	H	ØS	L	
270400	4	2,9	14	9,1	13,5	100
270600	6	5	16	11,1	15,5	50
270800	8	7	17	13,6	16,5	50


ART. 33 Doppio anello semplice girevole con asta
Swivel double banjo stem

CODICE	ØD	G	ØA	H	L1	L			
330418	4	1/8	5,5	5,5	43,8	21,1	14	3	25
330618	6	1/8	5,5	5,5	43,8	24,3	14	3	25
330614	6	1/4	7,8	7,5	51,5	25,5	18	4	25
330818	8	1/8	5,5	5,5	43,8	24,8	14	3	25
330814	8	1/4	7,8	7,5	51,5	26,5	18	4	25
331014	10	1/4	7,8	7,5	51,5	28,4	18	4	25


ART. 34 Triplo anello semplice girevole con asta
Swivel triple banjo stem

CODICE	ØD	G	ØA	H	L1	L			
340418	4	1/8	5,5	5,5	58,4	21,1	14	3	10
340618	6	1/8	5,5	5,5	58,4	24,3	14	3	10
340614	6	1/4	7,8	7,5	67	25,5	18	4	10
340818	8	1/8	5,5	5,5	58,4	24,8	14	3	10
340814	8	1/4	7,8	7,5	67	26,5	18	4	10
341014	10	1/4	7,8	7,5	67	51,5	18	4	10

